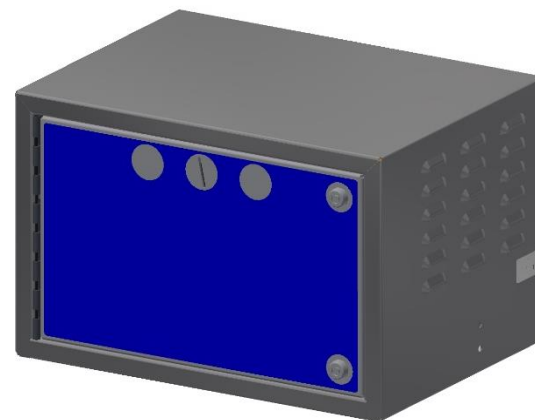




Models - **8685-2G, 8685-2GVR, 8685-2GW, 8685-2GWVR, 8685-2GVR-1, 8685-2GWVR-1, 8685-2FG, 8685-2FGW**

Page 2	Product Information
Page 3	Specifications
Page 4	Important Safety Instructions
Page 5	Product Dimensions
Page 6-10	Installation
Page 11	Timer Set-Up
Page 12	Operating Instructions & Maintenance
Page 12-13	Troubleshooting
Page 14-23	Parts List
Page 24	Wiring Diagram



PRODUCT INFORMATION

Please take a moment to fill out the information below in order to aid us with any future sales or service inquiries. Model number and serial number information can be found on the serial tag located inside the control box and/or on the lower exterior of the can. Key number can be found on the tag that comes attached to the keys. There may be more than one key number depending on unit.

Please keep this information with your records.

MODEL#: _____

SERIAL#: _____

KEY NUMBER(S): _____

DATE PURCHASED: _____

DISTRIBUTOR: _____

**J.E. Adams Industries
1025 63rd Ave. S.W.
Cedar Rapids, IA 52404
1-800-553-8861
www.jeadams.com**

Specifications

Unit specifications: 8685-2G, 8685-2GVR, 8685-2GW, 8685-2GWVR, 8685-2GWVR-1 & 8685-2GVR-1, 8685-2FG, 8685-2FGW

Voltage: 120vac, 60hz

Amperage: (1) 15 amp dedicated service is required

Compressor: $\frac{3}{4}$ hp, twin cylinder models

Water Solenoid: 120vac, 60hz

Weight: 57 lbs, no packaging

DUTY CYCLE: 3.2 minutes on, 3.2 minutes off.

NOTE: "UNIT INTENDED FOR COMMERCIAL USE ONLY"

IMPORTANT SAFETY INSTRUCTIONS

When using an electrical appliance, basic precautions should always be followed, including the following:

READ ALL INSTRUCTIONS BEFORE USING (THIS APPLIANCE)

WARNING – To reduce the risk of fire, electric shock, or injury:

- Use only as described in manual. Use only manufactures recommended attachments.
- Do not allow to be used as a toy. Close attention is necessary when used by or near children.
- Do not put any object into openings. Do not use with any opening blocked; keep free of dirt and anything that may reduce flow.
- Keep hair, loose clothing, fingers, and all parts of body away from openings and moving parts.
- Do not use near flammable or combustible liquids, such as gasoline, or use in areas where they may be present.
- Do not use near anything that is burning or smoking, such as cigarettes, matches, or hot ashes.
- Products such as "Fix-A-Flat" are highly combustible and cannot be used in conjunction with air machine!

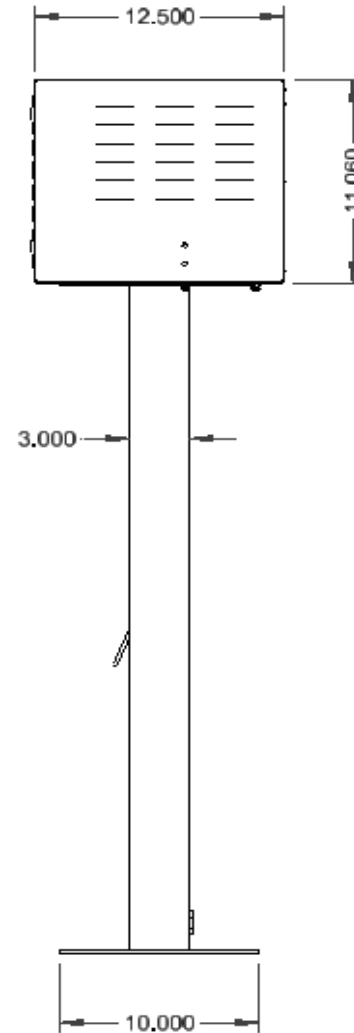
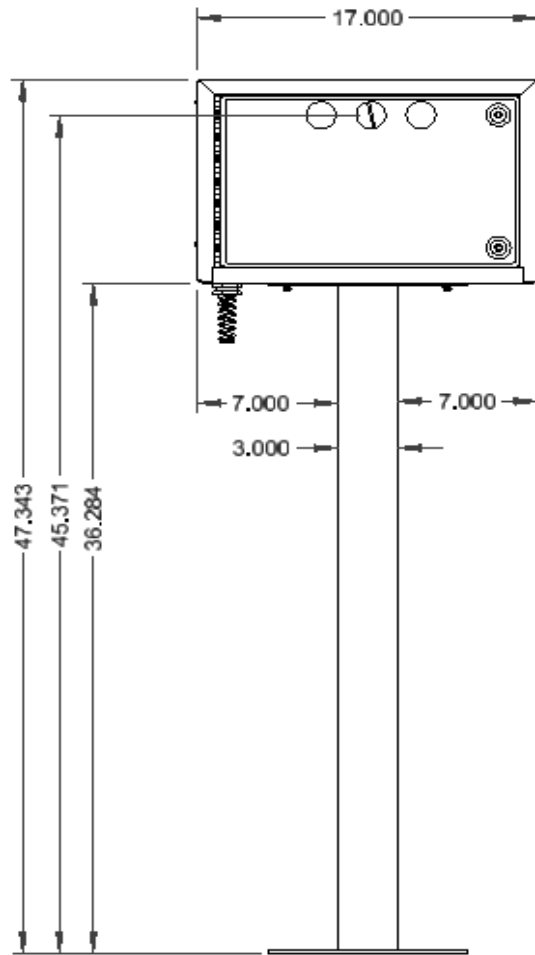


SAVE THESE INSTRUCTIONS



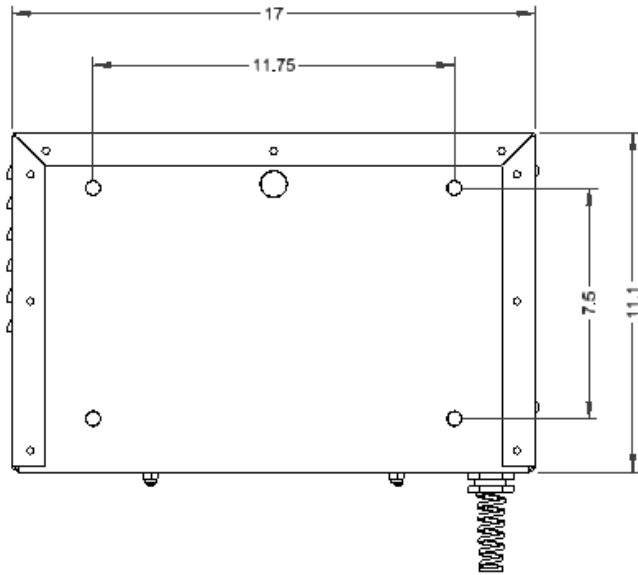
- **Installation Instructions:**
- Determine location to mount unit (“**DANGER**” “**THIS EQUIPMENT INCORPORATES PARTS SUCH AS SWITCHES, MOTORS, OR THE LIKE THAT TEND TO PRODUCE ARCS OR SPARKS THAT CAN CAUSE AN EXPLOSION. WHEN LOCATED IN GASOLINE-DISPENSING AND SERVICE STATIONS INSTALL AND USE AT LEAST 20 FEET (6 M) HORIZONTALLY FROM THE EXTERIOR ENCLOSURE OF ANY DISPENSING PUMP AND AT LEAST 18 INCHES (450 MM) ABOVE A DRIVEWAY OR GROUND LEVEL.**”
- Run electrical service to that location.
- **Grounding Instructions:** This appliance must be connected to a grounded metal, permanent wiring system; or an equipment-grounding conductor must be run with the circuit conductors and connected to the equipment-grounding terminal or lead on the appliance.
- All local and national electric codes must be followed for installation and use.
- Licensed electricians are recommended for installation.

PRODUCT DIMENSIONS



AIR MACHINE WITH 8819-50W-P

Wall mounting:



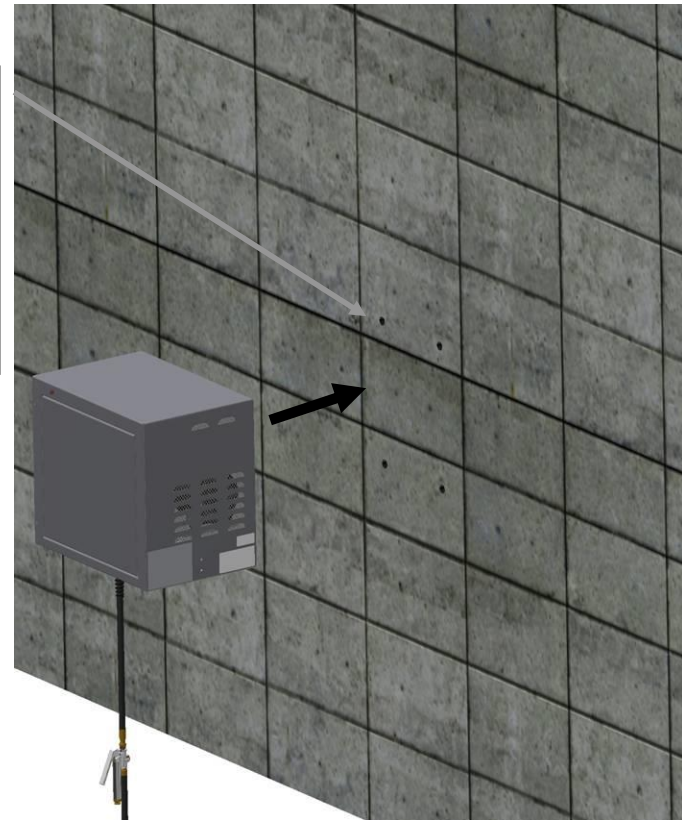
Drill holes according to rear of cabinet 7.5" x 11.75" bolt pattern.

WALL MOUNTING PATTERN, REAR VIEW:

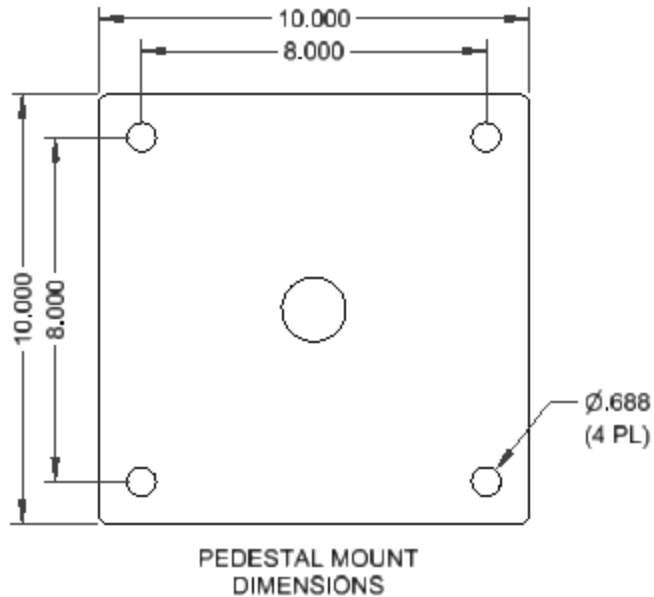
Use minimum 3/8" diameter bolt and drill/anchor at least 4" into block or concrete.

After drilling holes in concrete wall for mounting, open cabinet door and lift/align cabinet to wall and fasten with customer supplied hardware.

Use two people!!



8819-50W-P pedestal mounting:



PEDESTAL MOUNTING PATTERN, BOTTOM VIEW:

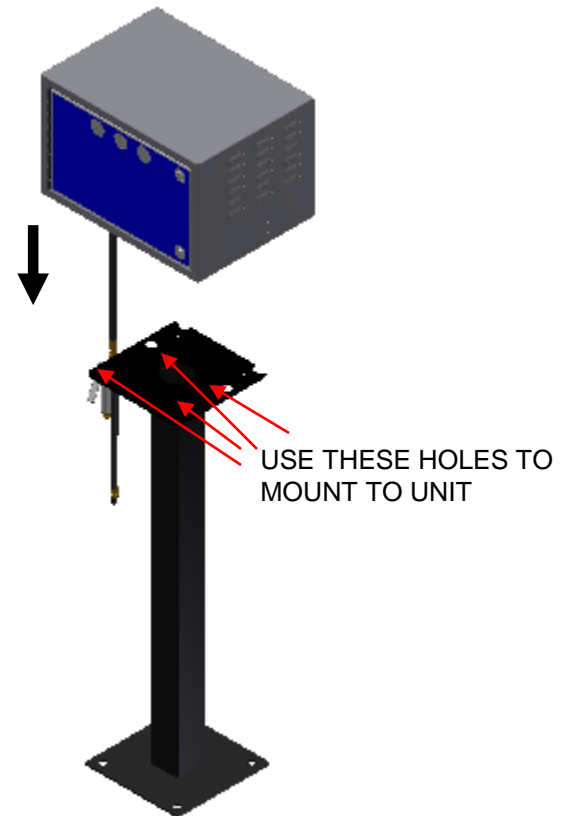
Use minimum 3/8" diameter stud and drill/anchor at least 4" into concrete.

Vault Mounting:

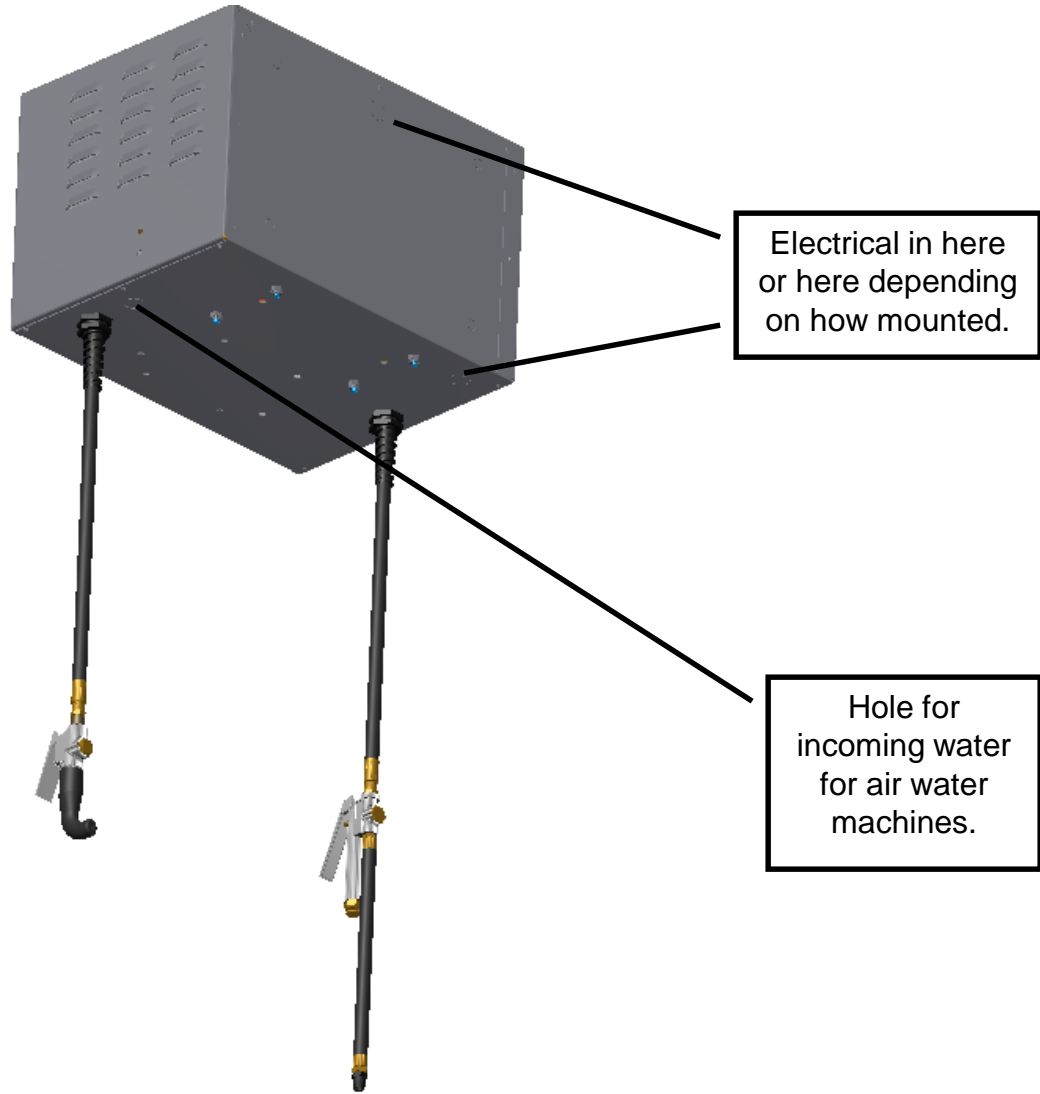
See Manual "8685 Vault Mount Instructions"

After mounting pedestal to concrete, open cabinet door and lift/align cabinet to pedestal with nuts/washers to carriage bolts on pedestal mounting plate.

Use two people!!



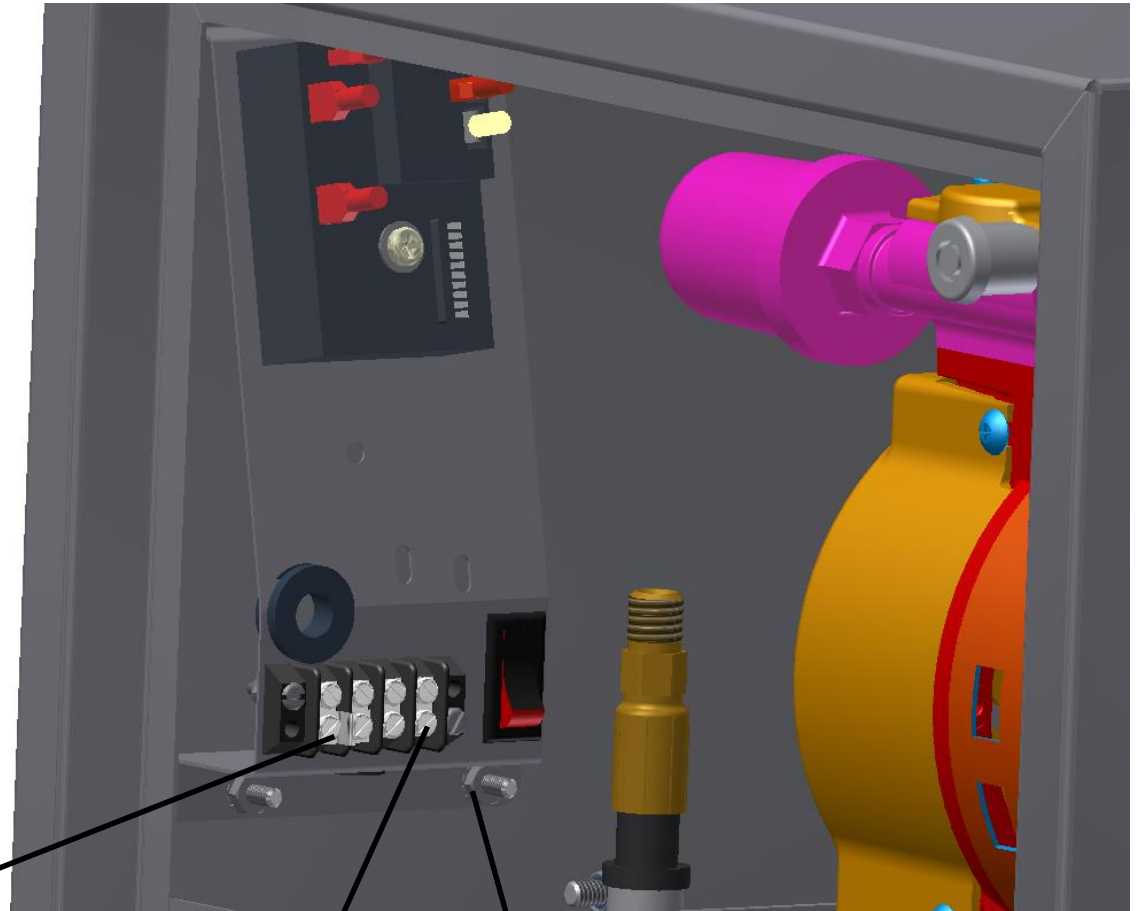
8685 Cabinet:



Electrical:

Open door to air machine to access terminal strip.

NOTE: AIR MACHINE SHOULD BE INSTALLED PER LOCAL ELECTRICAL CODES BY QUALIFIED ELECTRICIAN.

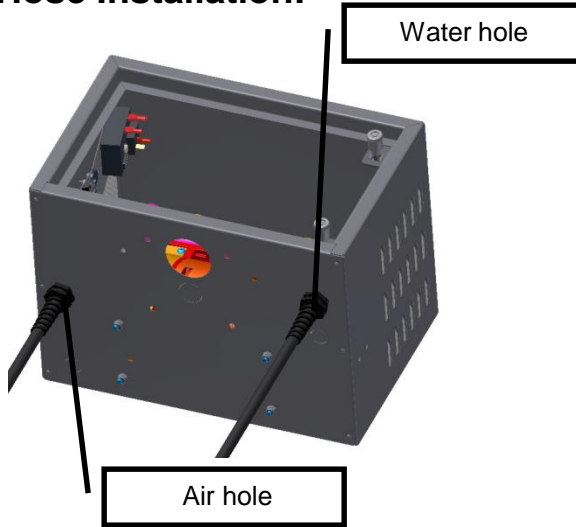


Consult electrical diagram on last page of manual for specifics. Connect 120V white "neutral" here.

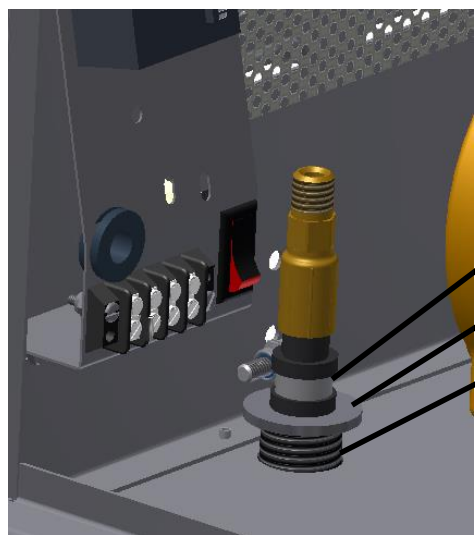
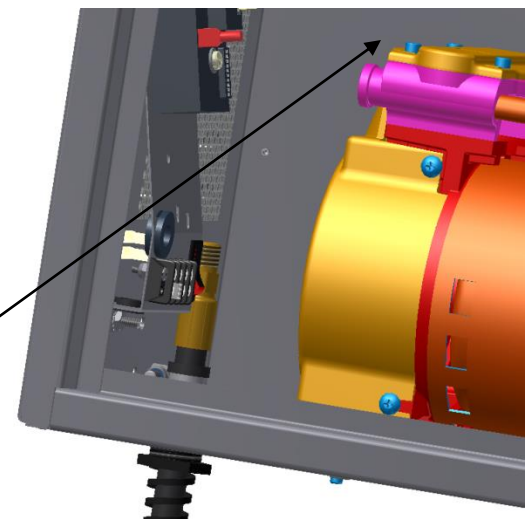
Consult electrical diagram on last page of manual for specifics. Connect 120V black "hot" here.

Consult electrical diagram on last page of manual for specifics. Connect green "ground" here.

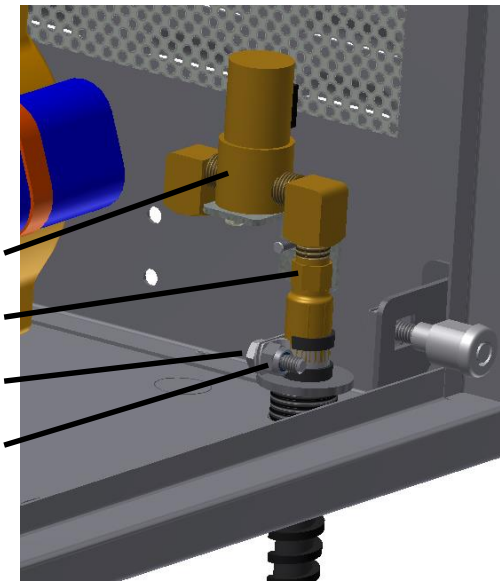
Hose Installation:



- Hoses do not come installed in unit. A hardware pack has been sent with unit for the Installation as follows.
- IMPORTANT: BEFORE INSTALLING HOSE AND FILTER TO HEAD OF COMPRESSOR MAKE SURE ALL PLASTIC PLUGS ARE REMOVED FROM PORTS.**
- Insert black flex strain relief into bottom of hole and attach nut.
- Slide hose thru strain relief into unit.
- Drop washer down the hose till it rest on flex strain inside unit.
- For air attach hose to the left back port of compressor.
- Place clamp around hose right on top of washer sitting on flex stain relief.
- Insert bolt into hole on clamp and attach nut and tighten.
- If the machine also has water follow the steps above but instead of attaching to compressor; hose screws into elbow as shown.

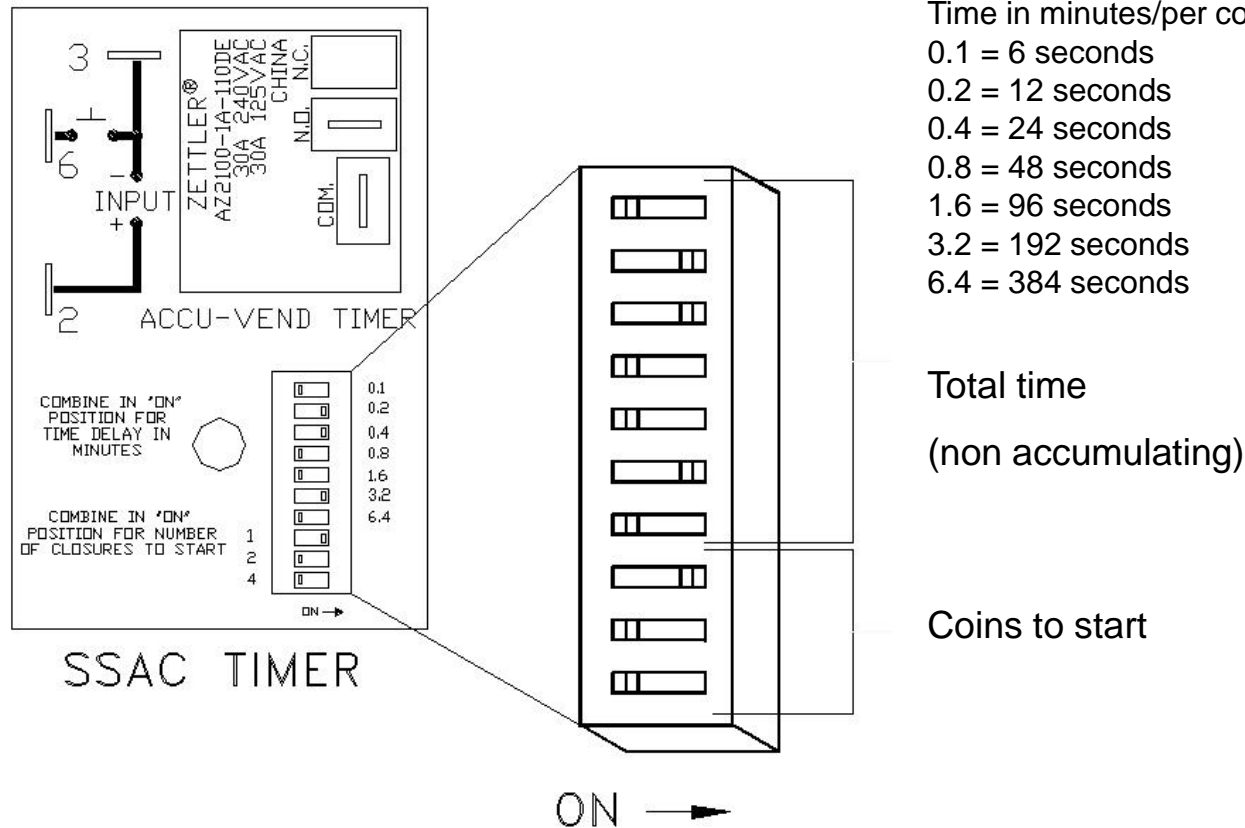


- | | |
|--------------------|----------------|
| Clamp | Water solenoid |
| Washer | Water hose |
| Flex Strain Relief | Bolt |
| | Nut |



Programming:

The below timer pictured is the standard SSAC model that allows the end user to select the "coins to start" and the "total time" by settings series of dip switches. The number of "coins to start" dip switch is how many quarters are needed to make the machine come on. In the below example, the "one coin" dip is selected which makes the unit come on with one coin. The "total time" will then need to be set, but a good rule of thumb would be 4 minutes which requires dip switches 3.2 and .8 to be set to on. This scenario means 1 quarter will provide 4 minutes of vacuum time. The total time can always be changed by adding or subtracting time. If the operator would later decide to increase the cost of the unit to "2" quarters, the 2 dip switch would need to be in the on position (all other off) and the time dip switches would still be 3.2 and .8 dips selected for 4 minutes. Timer is non accumulating so coin to start is just to start and time is total time regardless of coin to start.



Machine Operating Instructions:

- 1) Read safety instructions on previous pages.
- 2) Push start button or insert coins to start.
- 3) Compressor will start.
- 4) Apply chuck to tire valve stem and fill to desired pressure.
NOTE: For best results, remove valve stem covers on all tires before depositing money.
- 5) Hang hose up when finished.

Maintenance:

- **All servicing of machine should be conducted by an authorized service representative!**
- Periodically inspect hose, chuck, and chuck washer for wear or fatigue.
- Every month remove filter from compressor and clean.
- Periodically inspect electrical wires and connections for wear or fatigue.
- Clean canister with a stainless steel cleaner as needed.
- Decals can be cleaned with mild soap and water.
- Replacement parts can be ordered through JE Adams or your nearest dealer.

WHEN PERFORMING MAINTENANCE OR TROUBLE-SHOOTING, TURN POWER OFF! QUALIFIED PERSONNEL ONLY!

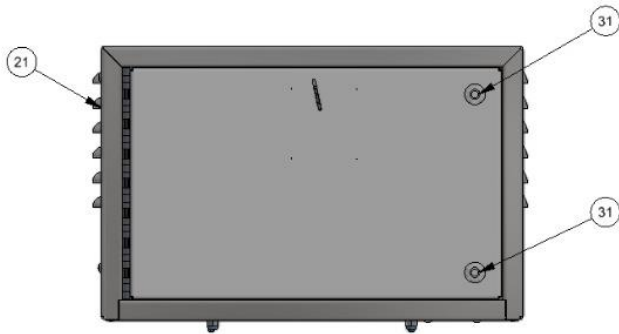


TROUBLESHOOTING:

ALWAYS DISCONNECT POWER BEFORE TROUBLESHOOTING!!

Problem	Possible cause	Solution
Unit is not powered.	Breaker inside fuse panel is not in the on position.	Turn breaker on.
	No power to machine.	Check incoming power line voltage.
	Machine power switch is not on.	Remove dome and flip switch.
	Loose connection.	Check incoming power connection.

Unit runs but will not inflate tire.	Air is leaking from unit somewhere.	Turn power off to unit, apply chuck to air source with at least 30lbs of pressure and listen carefully for leaks inside cabinet or air hose. Replace faulty component if leaking.
	If no system leaks, is compressor putting out enough pressure?	If compressor cannot force air into tire, the compressor may have exceeded its life span and need rebuilt (about 1000 hours).
	Chuck washer is worn out?	Replace rubber washer inside chuck with JE Adams PN 8533-3CW.
	Temperature is below freezing and condensation off compressor has froze in air hose.	Remove air hose and chuck and bring into warm area to thaw.
Unit keeps tripping breaker from incoming power source	Wrong size breaker or other components running on same circuit.	Install correct breaker for compressor and make sure line is a dedicated power source.
	Compressor or timer might be shorted out?	Isolate problem component and replace if necessary.
Unit will not start	Possible component failure	Check key components to isolate failure:
		Timer: Verify proper input voltage. Activate timer. If no output voltage is present when timer should be active, replace timer.
		Coin mech: If using a mechanical coin mech, remove the wires leading to the timer from the coin mech and tap them together one time for each coin necessary to start the timer. If machine starts, replace the coin mech.
Unit will not dispense water (water machines only).	Is source water turned on and not frozen?	Turn on water to system and make sure temperature is above 32 deg.
	Is water solenoid getting power from timer?	If getting power from timer, replace solenoid.



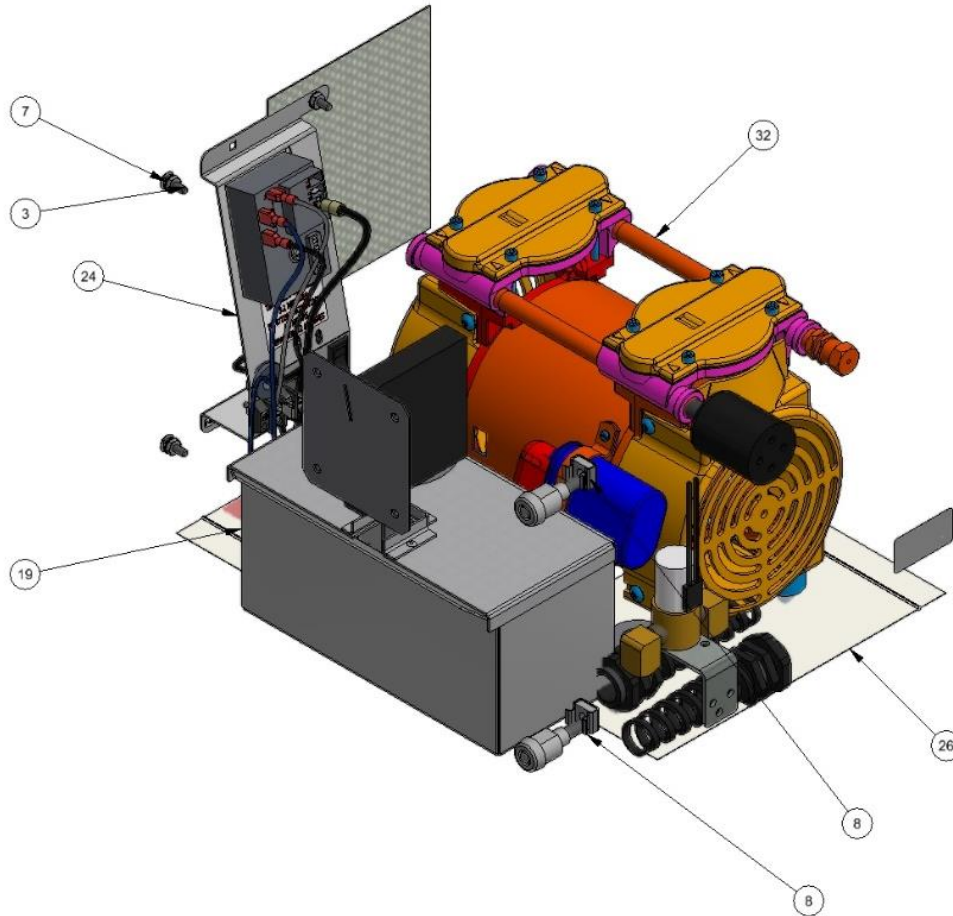
BILL OF MATERIALS			
ITEM	PART NUMBER	DESCRIPTION	QTY
1	1079-3	GASKET, DOOR SEAL	49.36"
2	5603D2	NUT, NYLOCK, 1/4-20, SS	4
3	5604D1	#10-24 x 1/2 CARR BOLT	4
4	5609D1	LOCK WASHER, #10 INT TOOTH, ZP	2
5	5610D1	8x32 x 1/2 SLOT SCREW	2
6	5611D1	NUT, 8-32 UNC KEPP-ZINC PLATE	2
7	5611D2	NUT, 10-24 UNC KEPP- ZINC	4
8	5644D1	CAGE NUT 5/16-18	2
9	5800D6	90 DEG. NPT STREET ELBOW	2
10	6024	ABUS DISKUS 26/70 LOCK	1
11	8124B001	COIN ACCEPTOR, IMONEX	1
12	8157	NUT, #6-32 KEPP NUT STAINLESS	4
13	8180	WARNING, WIRE TEMP RATING	1
14	8183	DECAL, DISCONNECT POWER	1
15	8437D002	ETL DECAL, AIR MACHINES	1
16	8551	SOLENOID BRACKET	1
17	8659-110-2A	COVER ASSEMBLY, COIN BOX	1
18	8659-110-3	LOCK TAB	1
19	8659-110W	COIN BOX WELDMENT	1
20	8659-126AW-KIT	DECAL, LOW COST AIR/WATER	1
21	8659-3W-100	CABINET WELDMENT, AIR MACHINE, SCREW LOCKS	1
22	8659-999	DECAL, MAX TIME	1
23	8670KIT-2W	HARDWARE PACK, PED AIR/WATER MACHINE	1
24	8673	TIMER ASSEMBLY-SSAC	1
25	8685BOX	CARDBOARD BOX	1
26	8685KIT-B	KIT, AIR/WATER HOSE INSTALLATION	1
27	8685PAD	CARDBOARD INSERT	2
28	8697	SOLENOID, 120/60-KIP-NORGREN	1
29	8732	PRODUCT NAMEPLATE	1
30	8754	DECAL, DANGER	1
31	8958-2	MEDECO SCREW LOCK	2
32	9862	110VAC 3/4 TWIN GAST COMPRESSOR	1
33	8685-FILINS	INSTRUCTION, FILTER ASSEMBLY	1

NOTE:

- 1) MACHINE BE USED WITH PEDESTAL 8819-50 TO MOUNT DIRECTLY TO A FLAT HARD SURFACE OR MACHINE CAN BE MOUNTED DIRECTLY TO A WALL.
- 2) USE WIRE DIAGRAM "8670 SERIES, SSAC, ALL COMPRESSORS".
- 3) PLEASE NOTE ON THE WIRE DIAGRAM THAT THE 8673-9 DOES NOT APPLY TO THIS UNIT.
- 4) AIR HOSE, WATER HOSE AND CHUCK NOT TO BE INSTALLED IN UNIT. SEND ALONG WITH UNIT AND TO BE INSTALLED BY CUSTOMER. HARWARE KIT 8685KIT-B TO BE SENT ALONG TO AID IN HOSE INSTALLATION.
- 5) PLACE COPY OF 8685-FILINS AIR FILTER INSTRUCTIONS INSIDE CABINET BUT SEPARATE FROM MANUAL.

REV	NO.	DESCRIPTION	DATE	BY	TITLE
E	8053	ADDED 8685-FILINS, NOTE 5	7/26/17	MWS	AIR WATER MACHINE ASSEMBLY, SCREW LOCK UNSPECIFIED TOLERANCES 1 PL ±.030 2 PL ±.020 3 PL ±.003 ANGLE ± 1° CEDAR RAPIDS, IOWA DRAWN BY: chadk DATE: 9/5/2012 SCALE: 1 / 2 SHEET NO: 8685-2GW REV: E
D	7600	ADD 8180 DECAL BELOW T-STRIP, ADD MAX TIME & ETL DECAL	102615	JF	
C	7440	REMOVED 6408 & 6049; ADDED 8685BOX & 8685BOX	3-30-15	CK	
B	7153	REMOVED 5644D2 AND ADDED 5644D1	8-29-13	CK	

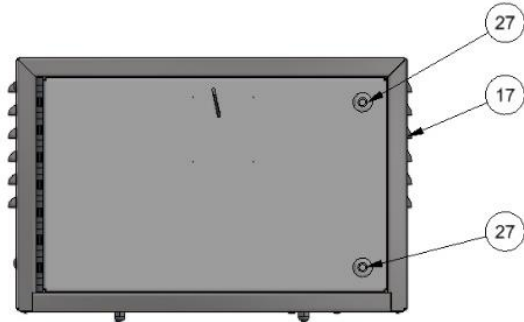
THIS DOCUMENT SHALL NOT BE REPRODUCED NOR SHALL THE INFORMATION THEREIN BE USED BY OR DISCLOSED TO OTHERS EXCEPT AS AUTHORIZED BY J.E. ADAMS INDUSTRIES



TITLE		AIR WATER MACHINE ASSEMBLY, SCREW LOCK	
UNSPECIFIED TOLERANCES	DATE	SCALE	SHEET
1 PL ±.030	9/5/2012	2 / 2	2 / 2
2 PL ±.020			
3 PL ±.003			
ANGLE ± 1°			
DRAWN BY		chadk	
DATE		9/5/2012	
PART NO		8685-2GW	
REV		E	



REV	NO.	DESCRIPTION	DATE	BY
THIS DOCUMENT SHALL NOT BE REPRODUCED NOR SHALL THE INFORMATION THEREIN BE USED BY OR DISCLOSED TO OTHERS EXCEPT AS AUTHORIZED BY J.E. ADAMS INDUSTRIES				



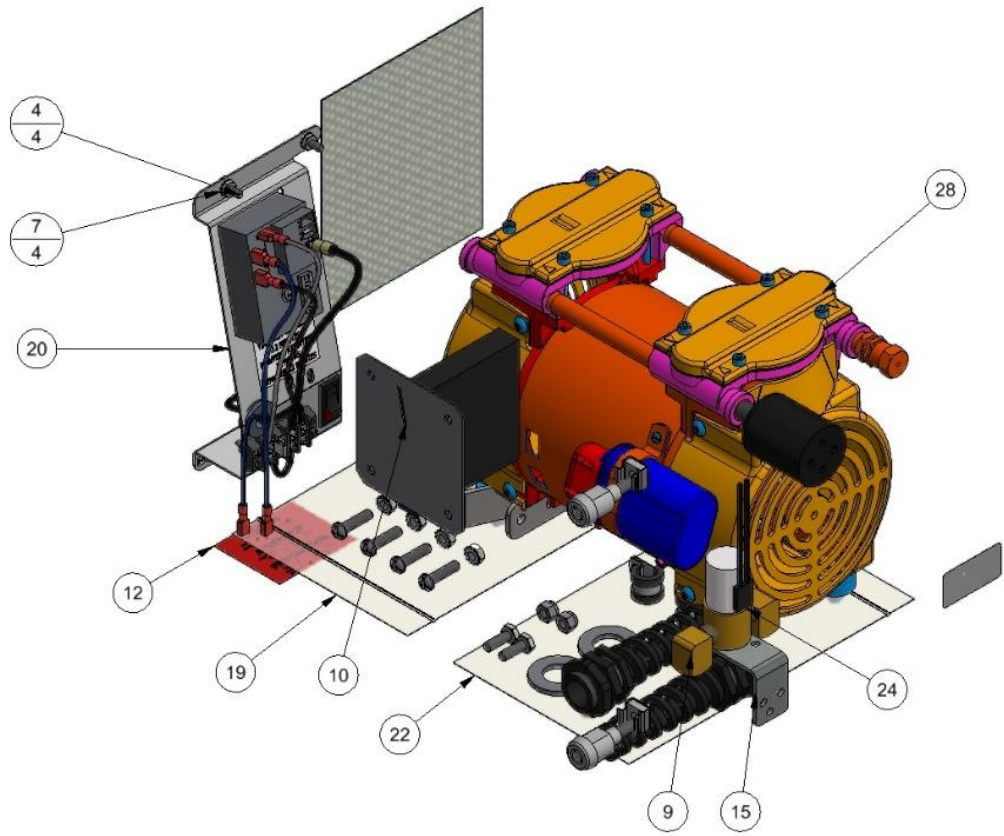
BILL OF MATERIALS			
ITEM	PART NUMBER	DESCRIPTION	QTY
1	1009	COIN FUNNEL	1
2	1079-3	GASKET, DOOR SEAL	49.36"
3	5603D2	NUT, NYLOCK, 1/4-20, SS	4
4	5604D1	#10-24 x 1/2 CARR BOLT	4
5	5609D1	LOCK WASHER, #10 INT TOOTH, ZP	2
6	5610D1	8x32 x 1/2 SLOT SCREW	2
7	5611D2	NUT, 10-24 UNC KEPP- ZINC	4
8	5644D1	CAGE NUT 5/16-18	2
9	5800D6	90 DEG. NPT STREET ELBOW	2
10	8124B001	COIN ACCEPTOR, IMONEX	1
11	8157	NUT, #6-32 KEPP NUT STAINLESS	4
12	8180	WARNING, WIRE TEMP RATING	1
13	8183	DECAL, DISCONNECT POWER	1
14	8437D002	ETL DECAL, AIR MACHINES	1
15	8551	SOLENOID BRACKET	1
16	8659-126AW-KIT	DECAL, LOW COST AIR/WATER	1
17	8659-3W-100VR	CABINET WELDMENT, AIR MACHINE, SCREW LOCKS, VR	1
18	8659-999	DECAL, MAX TIME	1
19	8670KIT-2W	HARDWARE PACK, PED AIR/WATER MACHINE	1
20	8673	TIMER ASSEMBLY-SSAC	1
21	8685BOX	CARDBOARD BOX	1
22	8685KIT-B	KIT, AIR/WATER HOSE INSTALLATION	1
23	8685PAD	CARDBOARD INSERT	2
24	8697	SOLENOID, 120/60-KIP-NORGREN	1
25	8732	PRODUCT NAMEPLATE	1
26	8754	DECAL, DANGER	1
27	8958-2	MEDECO SCREW LOCK	2
28	9862	110VAC 3/4 TWIN GAST COMPRESSOR	1
29	8685-FILINS	INSTRUCTION, AIR FILTER INSTALL	1

NOTE:

- 1) TO BE USED WITH VAULT KIT 8685-3100A.
- 2) USE WIRE DIAGRAM "8670 SERIES, SSAC, ALL COMPRESSORS".
- 3) PLEASE NOTE ON THE WIRE DIAGRAM THAT THE 8673-9 DOES NOT APPLY TO THIS UNIT.
- 4) SEND 1009 FUNNEL WITH MACHINE
- 5) AIR HOSE, WATER HOSE AND CHUCK NOT TO BE INSTALLED IN UNIT. SEND ALONG WITH UNIT AND TO BE INSTALLED BY CUSTOMER. HARWARE KIT 8685KIT-B TO BE SENT ALONG TO AID IN HOSE INSTALLATION.
- 6) PLACE COPY OF 8685-FILINS AIR FILTER INSTRUCTIONS INSIDE CABINET BUT SEPARATE FROM MANUAL.

D	8053	ADD 8685-FILINS, AND NOTE 6	7/26/17	MWS	TITLE AIR WATER MACHINE ASSEMBLY, SCREW LOCK, VR				
C	7600	ADD 8180 DECAL BELOW T-STRIP, ADD MAX TIME & ETL DECAL	102815	JF	UNSPECIFIED TOLERANCES	MATERIAL			
B	7440	REMOVED 6408 & 6409; ADDED 8685PAD & 8685BOX	3-30-15	CK	1 PL ± .030	DRAWN BY	chadk		
A	7153	REMOVED 5644D2 AND ADDED 5644D1	8-29-13	CK	2 PL ± .020	DATE	9/11/2012		
REV	NO.	DESCRIPTION	DATE	BY	3 PL ± .003	SCALE	SHEET	NO	REV
THIS DOCUMENT SHALL NOT BE REPRODUCED NOR SHALL THE INFORMATION THEREIN BE USED BY OR DISCLOSED TO OTHERS EXCEPT AS AUTHORIZED BY J.E. ADAMS INDUSTRIES					ANGLE ± 1°	1 / 2	8685-2GWVR	D	

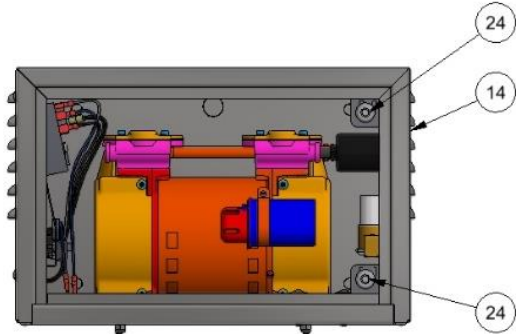




TITLE		AIR WATER MACHINE ASSEMBLY, SCREW LOCK, VR	
UNSPECIFIED TOLERANCES		MATERIAL	
1 PL ±.030	DRAWN BY	chadk	
2 PL ±.020	DATE	9/11/2012	
3 PL ±.003	SCALE	SHEET	2 / 2
ANGLE ± 1°		PART NO	8685-2GWVR
		REV	D



REV	NO.	DESCRIPTION	DATE	BY
THIS DOCUMENT SHALL NOT BE REPRODUCED NOR SHALL THE INFORMATION THEREIN BE USED BY OR DISCLOSED TO OTHERS EXCEPT AS AUTHORIZED BY J.E. ADAMS INDUSTRIES				



BILL OF MATERIALS			
ITEM	PART NUMBER	DESCRIPTION	QTY
1	1079-3	GASKET, DOOR SEAL	49.36"
2	5603D2	NUT, NYLOCK, 1/4-20, SS	4
3	5604D1	#10-24 x 1/2 CARR BOLT	4
4	5609D1	LOCK WASHER, #10 INT TOOTH, ZP	2
5	5610D1	8x32 x 1/2 SLOT SCREW	2
6	5611D2	NUT, 10-24 UNC KEPP- ZINC	4
7	5644D1	CAGE NUT 5/16-18	2
8	5800D6	90 DEG. NPT STREET ELBOW	2
9	8180	WARNING, WIRE TEMP RATING	1
10	8183	DISCONNECT POWER DECAL	1
11	8437D002	ETL DECAL, AIR MACHINES	1
12	8551	SOLENOID BRACKET	1
13	8659-126AW-KIT	DECAL, LOW COST AIR/WATER	1
14	8659-3W-100VR-1	CABINET WELDMENT, AIR MACHINE, SCREW LOCKS, VR, EXTERNAL COIN	1
15	8659-999	DECAL, MAX TIME	1
16	8670KIT-2W	HARDWARE PACK, PED AIR/WATER MACHINE	1
17	8673	TIMER ASSEMBLY-SSAC	1
18	8685BOX	CARDBOARD BOX	1
19	8685KIT-B	KIT, AIR/WATER HOSE INSTALLATION	1
20	8685PAD	CARDBOARD INSERT	2
21	8697	SOLENOID, 120/60-KIP-NORGREN	1
22	8732	PRODUCT NAMEPLATE	1
23	8754	DECAL, DANGER	1
24	8958-2	MEDECO SCREW LOCK	2
25	9862	110VAC 3/4 TWIN GAST COMPRESSOR	1
26	8685-FILINS	INSTRUCTIONS, AIR FILTER INSTALL	1

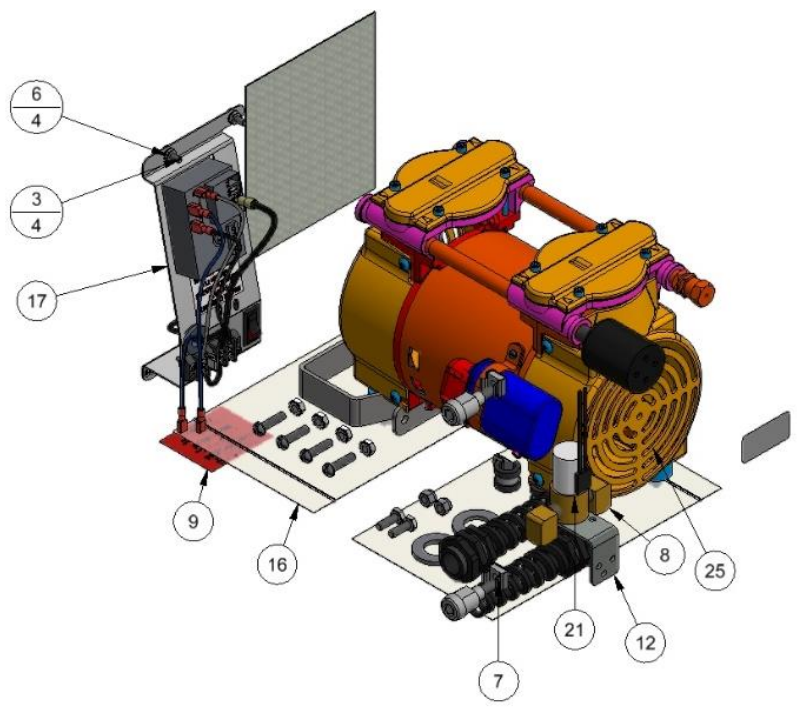


- NOTE:**
- 1) TO BE USED WITH VAULT KIT 8685-3100A-1.
 - 2) USE WIRE DIAGRAM "8670 SERIES, SSAC, ALL COMPRESSORS".
 - 3) PLEASE NOTE ON THE WIRE DIAGRAM THAT THE 8673-9 DOES NOT APPLY TO THIS UNIT.
 - 4) AIR HOSE, WATER HOSE AND CHUCK NOT TO BE INSTALLED IN UNIT. SEND ALONG WITH UNIT AND TO BE INSTALLED BY CUSTOMER. HARDWARE KIT 8685KIT-B TO BE SENT ALONG TO AID IN HOSE INSTALLATION.
 - 5) PLACE COPY OF 8685-FILINS AIR FILTER INSTRUCTIONS INSIDE CABINET BUT SEPARATE FROM MANUAL.

D	8053	ADD 8685-FILINS AND NOTE 5	7/26/17	MWS	TITLE: AIR WATER MACHINE ASSEMBLY, SCREW LOCK, VR, EXTERNAL COIN				
C	7600	ADD 8180 DECAL BELOW T-STRIP, ADD MAX TIME & ETL DECAL	10/28/15	JF	UNSPECIFIED TOLERANCES		DRAWN BY: chadk		
B	7440	REMOVED 6408 & 6409; ADDED 8685PAD & 8685BOX	3-30-15	CK	1 PL ±.030		DATE: 9/11/2012		
A	7153	REMOVED 5644D2 AND ADDED 5644D1	8-29-13	CK	2 PL ±.020		SCALE: 1 / 2		
REV	NO.	DESCRIPTION	DATE	BY	3 PL ±.003		PART NO. 8685-2GWVR-1		
					ANGLE ± 1°		SHEET 1 / 2		

THIS DOCUMENT SHALL NOT BE REPRODUCED NOR SHALL THE INFORMATION THEREIN BE USED BY OR DISCLOSED TO OTHERS EXCEPT AS AUTHORIZED BY J.E. ADAMS INDUSTRIES

J.E. ADAMS INDUSTRIES, LTD.
CEDAR RAPIDS, IOWA



TITLE
AIR WATER MACHINE ASSEMBLY, SCREW LOCK, VR, EXTERNAL COIL

UNSPECIFIED TOLERANCES	MATERIAL
1 PL ±.030	DRAWN BY chadk
2 PL ±.020	DATE 9/11/2012
3 PL ±.003	SCALE
ANGLE ± 1°	SHEET 2 / 2

CEDAR RAPIDS, IOWA

8685-2GWVR-1 D

REV	NO.	DESCRIPTION	DATE	BY
THIS DOCUMENT SHALL NOT BE REPRODUCED NOR SHALL THE INFORMATION THEREIN BE USED BY OR DISCLOSED TO OTHERS EXCEPT AS AUTHORIZED BY J.E. ADAMS INDUSTRIES				

NOTE:

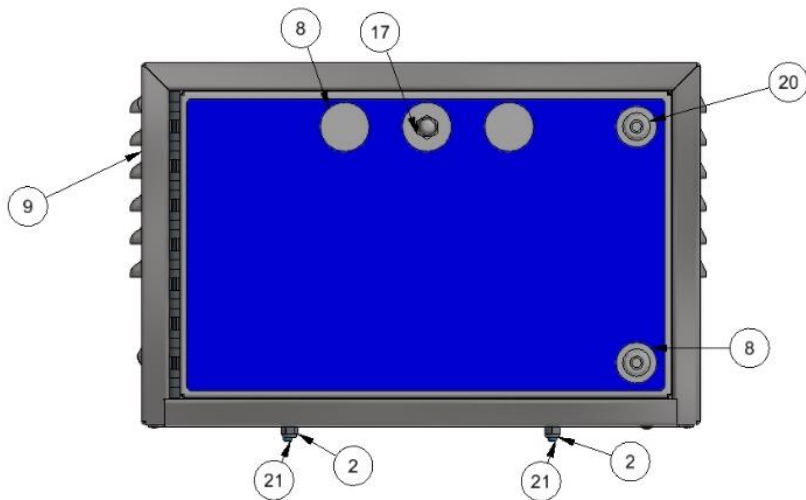
1) MACHINE BE USED WITH PEDESTAL 8819-50 TO MOUNT DIRECTLY TO A FLAT HARD SURFACE OR MACHINE CAN BE MOUNTED DIRECTLY TO A WALL.

2) USE WIRE DIAGRAM "8670 SERIES, SSAC, ALL COMPRESSORS".

3) PLEASE NOTE ON THE WIRE DIAGRAM THAT THE 8673-9 DOES NOT APPLY TO THIS UNIT.

4) AIR HOSE AND CHUCK NOT TO BE INSTALLED IN UNIT. SEND ALONG WITH UNIT AND TO BE INSTALLED BY CUSTOMER. HARWARE KIT 8685KIT-A TO BE SENT ALONG TO AID IN HOSE INSTALLATION.

5) PLACE COPY OF 8685-FILINS AIR FILTER INSTRUCTIONS INSIDE CABINET BUT SEPARATE FROM MANUAL.

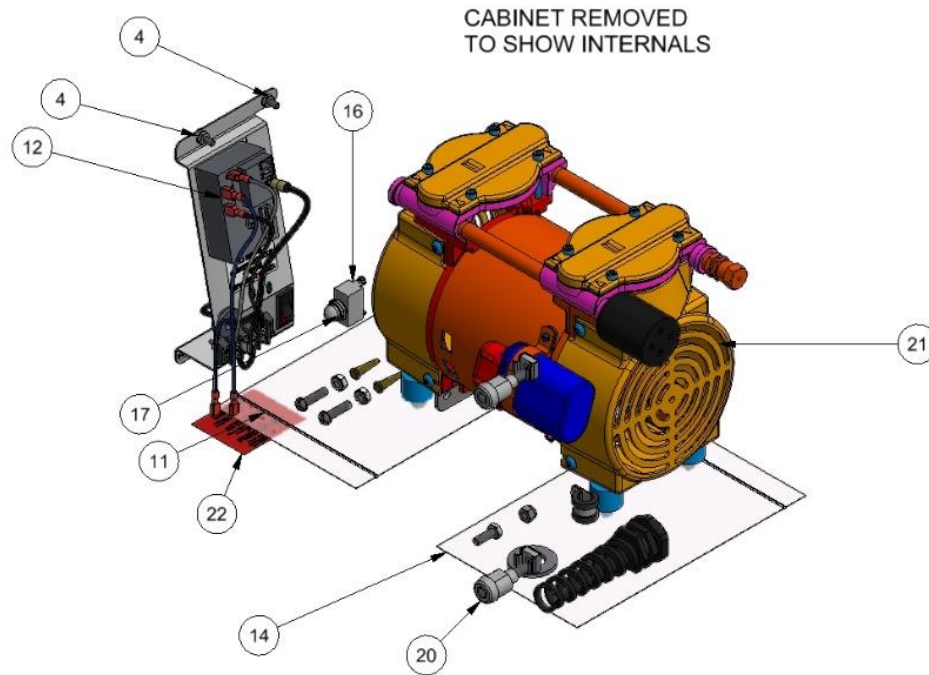


BILL OF MATERIALS			
ITEM	PART NUMBER	DESCRIPTION	QTY
1	1079-3	GASKET, DOOR SEAL	49.36
2	5603D2	NUT, NYLOCK, 1/4-20, SS	4
3	5604D1	#10-24 x 1/2 CARR BOLT	4
4	5611D2	NUT, 10-24 UNC KEPP- ZINC	4
5	5644D1	CAGE NUT, 5/16-18	2
6	8183	DECAL, DISCONNECT POWER	1
7	8437D002	ETL LABEL, AIR MACHINES	1
8	8659-126-KIT	DECAL, LOW COST AIR	1
9	8659-3W-100-F	CABINET WELDMENT, AIR MACHINE, SCREW LOCKS, FREE	1
10	8659-999	DECAL, MAX TIME	1
11	8670KIT-2	HARDWARE PACK, PED AIR MACHINE	1
12	8673	TIMER ASSEMBLY-SSAC	1
13	8685BOX	BOX	1
14	8685KIT-A	KIT, AIR HOSE INSTALLATION	1
15	8685PAD	PAD	2
16	8726	PUSH BUTTON	1
17	8727	BOOT, RUBBER, PUSHBUTTON	1
18	8732	PRODUCT NAMEPLATE	1
19	8754	DECAL, DANGER	1
20	8958-2	MEDECO SCREW LOCK	2
21	9862	110VAC 3/4 TWIN GAST COMPRESSOR	1
22	8180	WARNING, WIRE TEMP RATING	1
23	8685-FILINS	INSTRUCTIONS, AIR FILTER INSTALL	1

E	8053	ADDED 8685-FILINS AND NOTE 5	7/26/17	MWS
D	7600	ADD 8180 DECAL BELOW TERMINAL STRIP	102615	JF
C	7440	REMOVED 6408, 6409 & ADDED 8685BOX, 8685PAD	3-27-15	CK
B	7153	REMOVED 5644D2 AND ADDED 5644D1	8-29-13	CK
REV	NO.	DESCRIPTION	DATE	BY

TITLE			
FREE AIR MACHINE ASSEMBLY, SCREW LOCK			
UNSPECIFIED TOLERANCES	MATERIAL	CEDAR RAPIDS, IOWA	
1 PL ±.030	DRAWN BY	CHAD K.	
2 PL ±.020	DATE	12/18/2012	
3 PL ±.003	SCALE	SHEET	PART NO
ANGLE ±1°		1 / 2	8685-2FG
			REV E

THIS DOCUMENT SHALL NOT BE REPRODUCED NOR SHALL THE INFORMATION THEREIN BE USED BY OR DISCLOSED TO OTHERS EXCEPT AS AUTHORIZED BY J.E. ADAMS INDUSTRIES



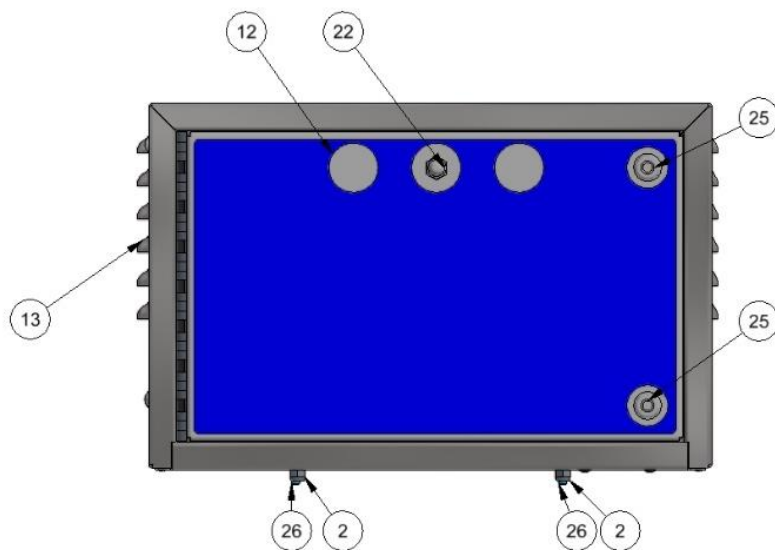
TITLE		FREE AIR MACHINE ASSEMBLY, SCREW LOCK	
UNSPECIFIED TOLERANCES	MATERIAL	CEDAR RAPIDS, IOWA	
1 PL ±.030	DRAWN BY	CHAD K.	
2 PL ±.020	DATE	12/18/2012	
3 PL ±.003	SCALE	SHEET	PART NO
ANGLE ± 1°		2 / 2	8685-2FG
			REV: E

REV	NO.	DESCRIPTION	DATE	BY

THIS DOCUMENT SHALL NOT BE REPRODUCED NOR SHALL THE INFORMATION THEREIN BE USED BY OR DISCLOSED TO OTHERS EXCEPT AS AUTHORIZED BY J.E. ADAMS INDUSTRIES

NOTE:

- 1) MACHINE BE USED WITH PEDESTAL 8819-50 TO MOUNT DIRECTLY TO A FLAT HARD SURFACE OR MACHINE CAN BE MOUNTED DIRECTLY TO A WALL.
- 2) USE WIRE DIAGRAM "8670 SERIES, SSAC, ALL COMPRESSORS".
- 3) PLEASE NOTE ON THE WIRE DIAGRAM THAT THE 8673-9 DOES NOT APPLY TO THIS UNIT.
- 4) AIR HOSE, WATER HOSE AND CHUCK NOT TO BE INSTALLED IN UNIT. SEND ALONG WITH UNIT AND TO BE INSTALLED BY CUSTOMER. HARWARE KIT 8685KIT-B TO BE SENT ALONG TO AID IN HOSE INSTALLATION.
- 5) PLACE COPY OF 8685-FILINS AIR FILTER INSTRUCTIONS INSIDE CABINET BUT SEPARATE FROM MANUAL.

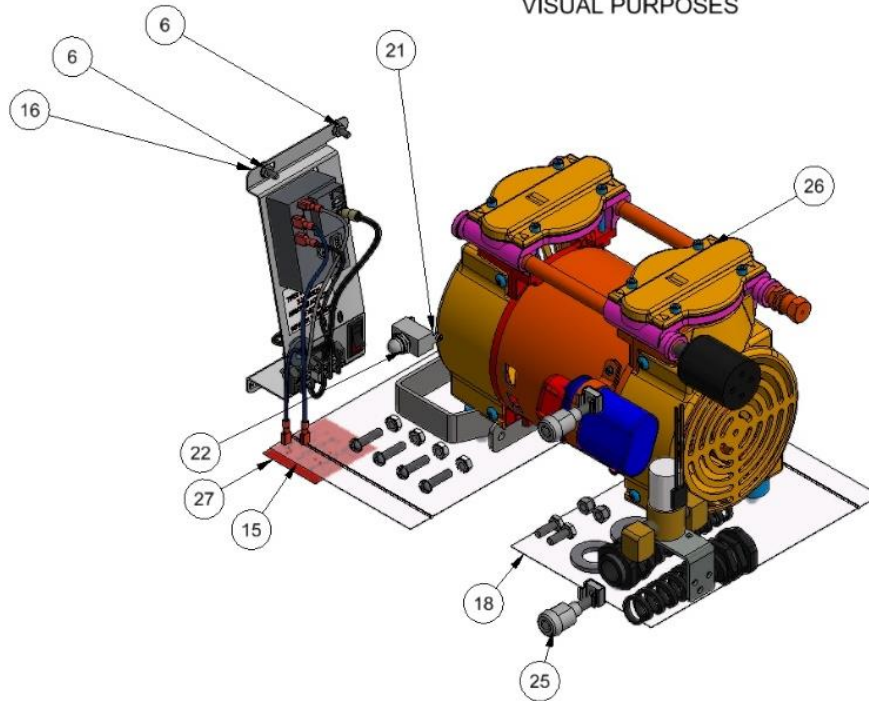


BILL OF MATERIALS			
ITEM	PART NUMBER	DESCRIPTION	QTY
1	1079-3	GASKET, DOOR SEAL	49.36"
2	5603D2	NUT, NYLOCK, 1/4-20, SS	4
3	5604D1	#10-24 x 1/2 CARR BOLT	4
4	5609D1	LOCK WASHER, #10 INT TOOTH, ZP	2
5	5610D1	8x32 x 1/2 SLOT SCREW	2
6	5611D2	NUT, 10-24 UNC KEPP- ZINC	4
7	5644D1	CAGE NUT, 5/16-18	2
8	5800D6	90 DEG. NPT STREET ELBOW	2
9	8183	DECAL, DISCONNECT POWER	1
10	8437D002	ETL LABEL, AIR MACHINES	1
11	8551	SOLENOID BRACKET	1
12	8659-126AW-KIT	DECAL, LOW COST AIR/WATER	1
13	8659-3W-100-F	CABINET WELDMENT, AIR MACHINE, SCREW LOCKS, FREE	1
14	8659-999	DECAL, MAX TIME	1
15	8670KIT-2W	HARDWARE PACK, PED AIR/WATER MACHINE	1
16	8673	TIMER ASSEMBLY-SSAC	1
17	8685BOX	CARDBOARD BOX	1
18	8685KIT-B	KIT, AIR/WATER HOSE INSTALLATION	1
19	8685PAD	CARDBOARD INSERT	2
20	8697	SOLENOID, 120/60-KIP-NORGREN	1
21	8726	PUSH BUTTON	1
22	8727	BOOT, RUBBER, PUSHBUTTON	1
23	8732	PRODUCT NAMEPLATE	1
24	8754	DECAL, DANGER	1
25	8958-2	MEDECO SCREW LOCK	2
26	9862	110VAC 3/4 TWIN GAST COMPRESSOR	1
27	8180	WARNING, WIRE TEMP RATING	1
28	8685-FILINS	INSTRUCTIONS, AIR FILTER INSTALL	1



E	8053	ADD 8685-FILINS AND NOTE 5	7/26/17	MWS	TITLE: FREE AIR WATER MACHINE ASSEMBLY, SCREW LOCK				
D	7600	ADD 8180 DECAL BELOW TERMINAL STRIP	102815	JF	UNSPECIFIED TOLERANCES	DRAWN BY: CHAD K.			
C	7440	REMOVED 6408 & 6409; ADDED 8685BOX & 8685PAD	3-30-15	CK	1 PL ±.030	DATE: 12/18/2012	SCALE: 1/2		
B	7153	REMOVED 5644D2 AND ADDED 5644D1	8-29-13	CK	2 PL ±.020	SHEET NO: 1/2			
REV	NO.	DESCRIPTION	DATE	BY	3 PL ±.003	PART NO: 8685-2FGW		REV: E	
<p>THIS DOCUMENT SHALL NOT BE REPRODUCED NOR SHALL THE INFORMATION THEREIN BE USED BY OR DISCLOSED TO OTHERS EXCEPT AS AUTHORIZED BY J.E. ADAMS INDUSTRIES</p>									

CABINET REMOVED FOR VISUAL PURPOSES



SHEET 2 OF 2

TITLE		FREE AIR WATER MACHINE ASSEMBLY, SCREW LOCK	
UNSPECIFIED TOLERANCES	MATERIAL	CEDAR RAPIDS, IOWA	
1 PL ±.030	DRAWN BY	CHAD K.	
2 PL ±.020	DATE	12/18/2012	
3 PL ±.003	SCALE	SHEET	2 / 2
ANGLE ± 1°	PART NO	8685-2FGW	
	REV	E	

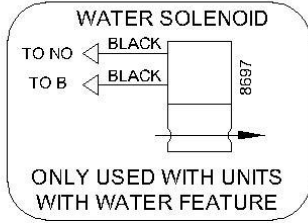
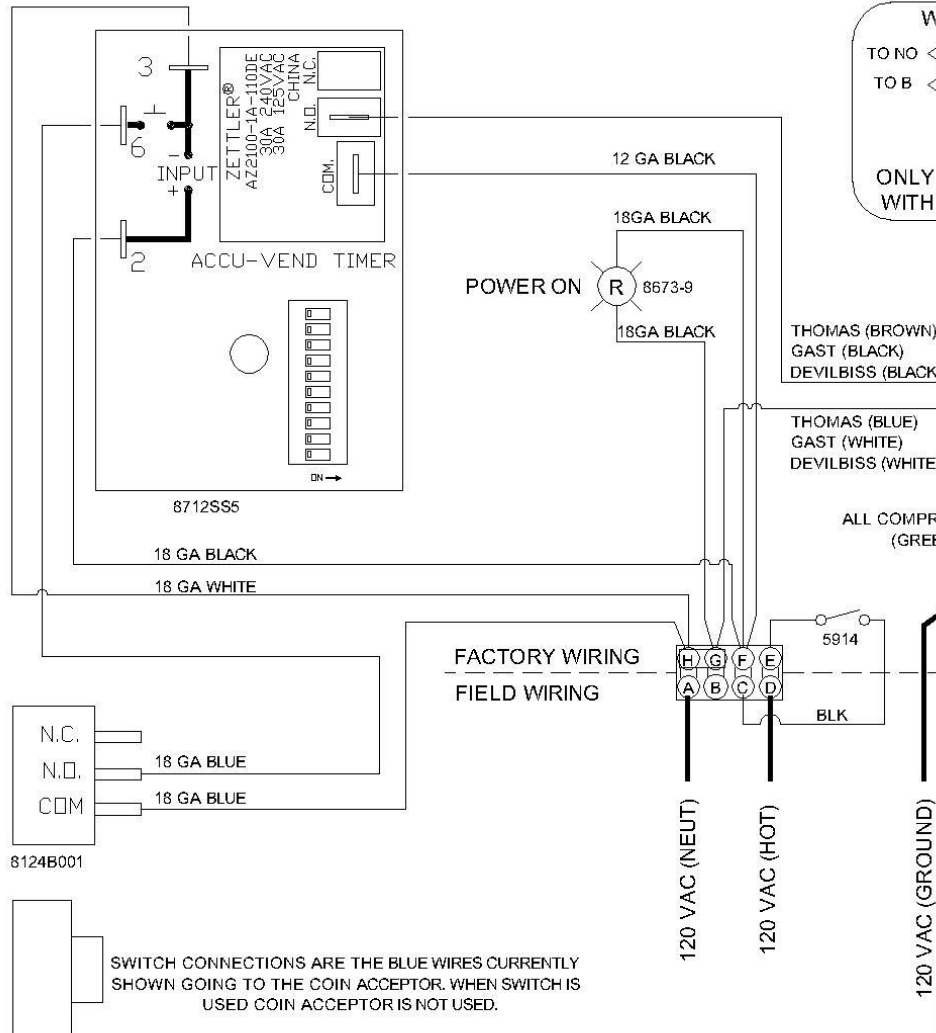
REV	NO.	DESCRIPTION	DATE	BY
THIS DOCUMENT SHALL NOT BE REPRODUCED NOR SHALL THE INFORMATION THEREIN BE USED BY OR DISCLOSED TO OTHERS EXCEPT AS AUTHORIZED BY J.E. ADAMS INDUSTRIES				

PART NO. **8670 SERIES SSAC**

THIS DOCUMENT SHALL NOT BE REPRODUCED NOR SHALL THE INFORMATION THEREIN BE USED BY OR DISCLOSED TO OTHERS EXCEPT AS AUTHORIZED BY J.E. ADAMS INDUSTRIES

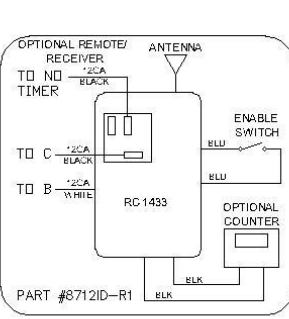
BILL OF MATERIAL

ITEM NO.	PART NO.	DESCRIPTION	QTY.
----------	----------	-------------	------



!! IMPORTANT !!
 TERMINAL STRIP IS ON LEFT SIDE OF MACHINE ON BACK WALL.
 FIELD WIRING MUST COMPLY WITH LOCAL AND NATIONAL ELECTRICAL CODES.
20AMP SERVICE IS REQUIRED FOR DEVILBISS UNITS

!! IMPORTANT !!
 TERMINAL STRIP IS ON LEFT SIDE OF MACHINE ON BACK WALL.
 FIELD WIRING MUST COMPLY WITH LOCAL AND NATIONAL ELECTRICAL CODES.
10AMP SERVICE IS REQUIRED FOR TWIN THOMAS & GAST UNITS



OPTIONAL COIN COUNTER
 BLACK TO C
 BLACK TO 6
 120VAC, PART # 8641-1

OPTIONAL CYCLE COUNTER
 BLACK TO N.D.
 BLACK TO B
 120VAC, PART # 8641

TITLE		SCALE		DRAWN BY		DATE		REL. FOR PROD.		PART NO.		REV.	
8670 SERIES, SSAC, ALL COMPRESSORS		-		CK		7-27-10		-		8670 SERIES SSAC		-	
UNSPECIFIED TOLERANCES		FRACT. ± 1/32		2 PL ± .020		3 PL ± .010		ANGLE ± 1.0°		CEDAR RAPIDS, IOWA		J.E. ADAMS INDUSTRIES LTD	

REV	NO.	DESCRIPTION	DATE	BY
-----	-----	-------------	------	----